



ADNEC

مركز أبوظبي الوطني للمعارض
Abu Dhabi National Exhibition Centre

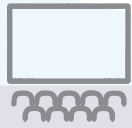


The Meeting Point Of World-Class Conferences

WHY ADNEC



133,000 sqm
Event space



6000 Capacity
ICC



21 Meeting Rooms



12 Conference Spaces



15 Minutes
From Abu Dhabi
Airport



2,000 Hotel Rooms
Within Walking
Distance



5 Minutes
From Tourist
Attractions



Safest In The
World
2019
City



11 Industry
Awards won
since 2015



Free
Super-Fast
WI-FI



In-House
Production
Services



Exceptional
Catering

WHAT OUR CLIENTS SAY



Lindsey Williamson
Director of Communication
– The International Council
of Nurses

“ADNEC is a fantastic place to have our conference. We have great facilities at the Centre and all the hotels are nearby so it's easily accessible for everyone. We're happy to be coming back in 2021 for our International Congress at ADNEC.”



Christine Trimmer
Executive Director of
International Society
for Infectious Diseases

“ADNEC brought together a nucleus of specialists who are committed to the success of the event and became a core part of our Content Committee, as well as assisting with relationship building with potential sponsors. ADNEC was a partner in the event and its success.”



Tala Al Ramahi
Chief Strategy Officer of the
Special Olympics World
Games Abu Dhabi 2019

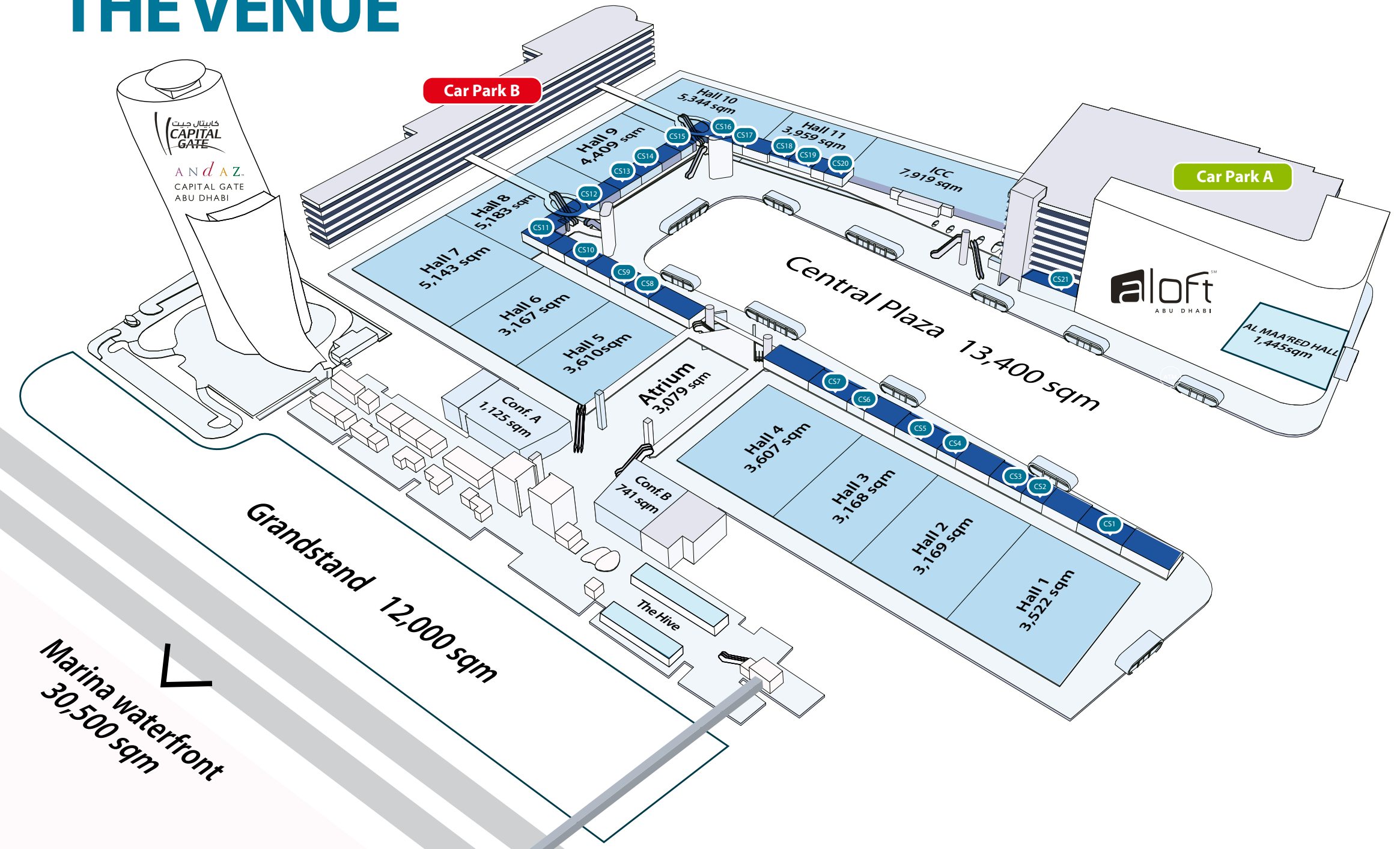
“We couldn't have run these Games without the support of ADNEC and having a world class facility like this in which to run our competitions.”



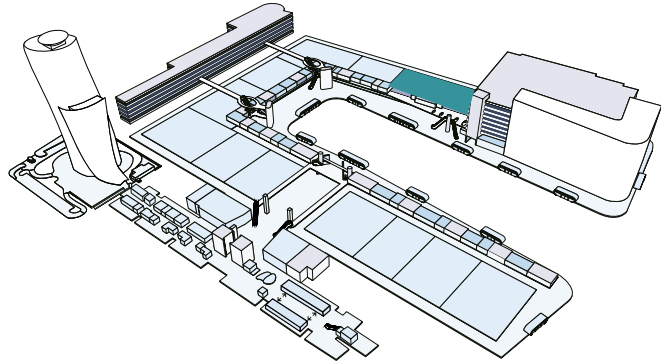
Cara Turner
Brand Director, Pharma,
Informa Markets

“This year, we brought CPhI to the Middle East and Africa and we chose ADNEC Abu Dhabi as our venue of choice.”

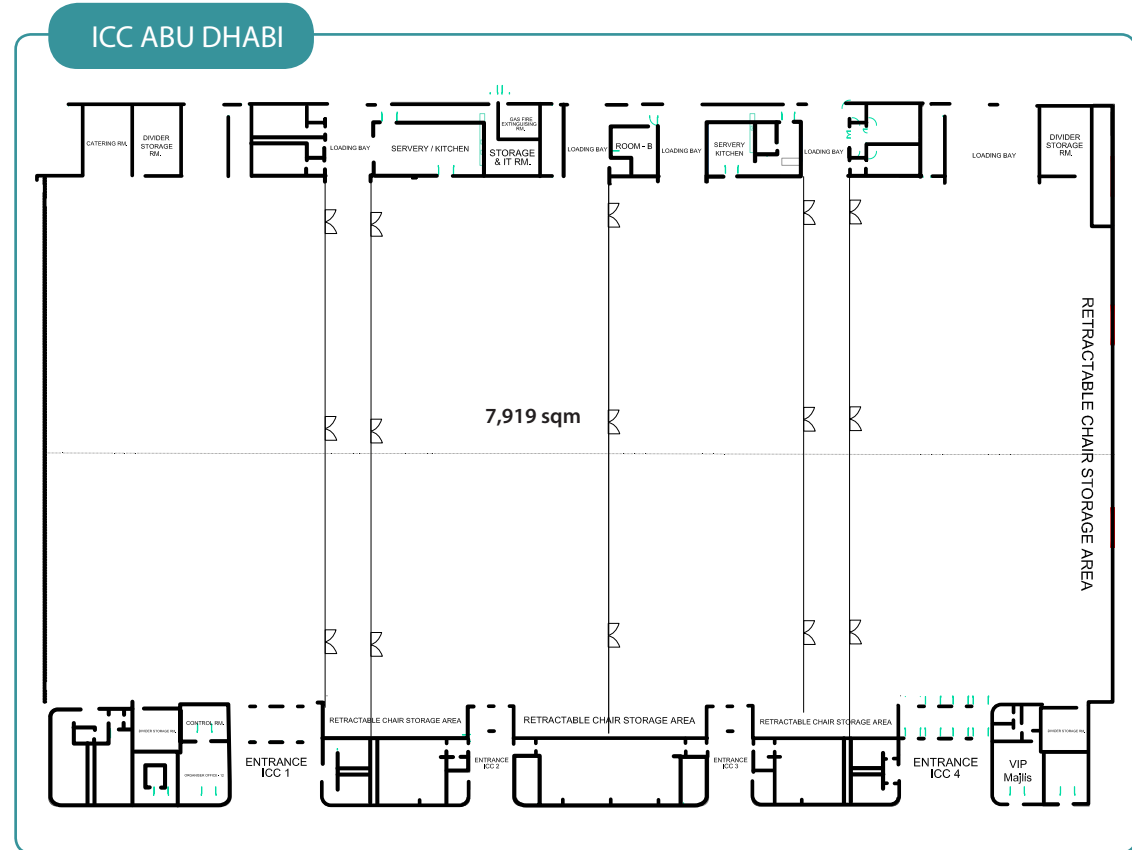
THE VENUE



ICC ABU DHABI



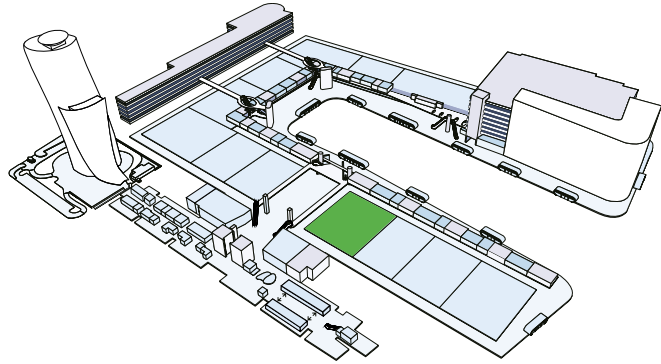
- › Fully flexible, tiered seating for up to 6,000 delegates
- › Adjacent exhibition space and catering areas
- › Very close to Aloft Hotel
- › Next to car park A



Dimensions	
Dimensions	66 x 120
Total floor area	7,919 sqm
Ceiling height (Clearance)	13.5 m finished floor to underside of steel roof truss
	13 m finished floor to undersides of movable wall tracks

Free Standing & Retractable Seating	
Total Seating capacity	6,000
Tiered seating	2,671
Flat floor seating	3,329

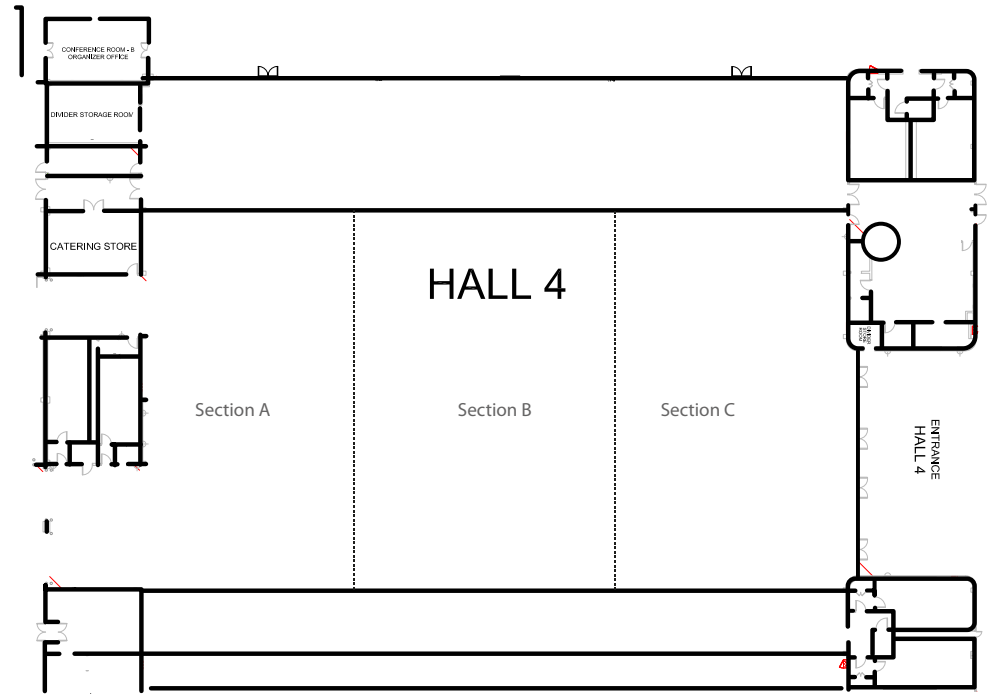
HALL 4



A flexible event solution, Hall 4 is a 3,000 capacity space for large events and can be easily sectioned into either two or three standalone spaces. The facility includes three audio systems, microphones and cabling together with three projectors, screens, lighting as well as the three stages to ensure that each of the sections has standalone capacity.



Hall 4

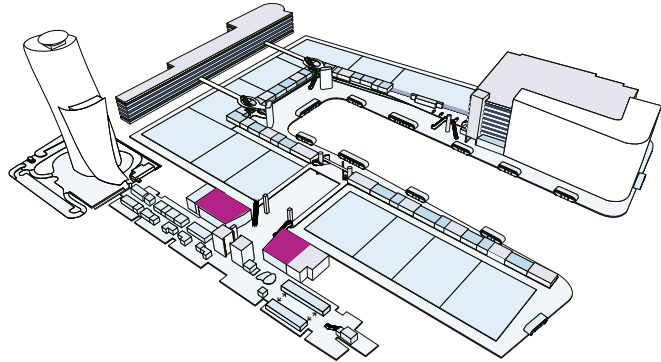


Dimensions

Floor Area	1,125 sqm
Ceiling Height	7.5 m

Capacities	Max Area	Part A	Part B	Part C
Area (sqm)	3,607	1,081	1,445	1,081
Cocktail/ Reception	1,832	536	760	536
Theatre Style	3,430	1,000	1,430	1,000
Classroom	1,716	528	660	528
Banquet	1,400	400	600	400

CONFERENCE HALLS



Conveniently accessible and stylishly decorated with a mixture of Arabian and modern fixtures, ADNEC's Conference Halls are the perfect location for any conference, banquet or special event. With a maximum capacity of 1,600 guests, each conference hall can be sub-divided into two, three and four smaller meeting rooms by fully retractable walls.

Dimensions (A)

Floor Area	1,125 sqm
Ceiling Height	7.5 m

Capacities	Max Area	Part A	Part B	Part C	Part D
Area (sqm)	1,125	288	248	217	215
Cocktail/ Reception	708	200	176	144	152
Theatre Style	1000	272	181	157	170
Classroom	513	114	105	87	96
Banquet	580	120	120	110	110

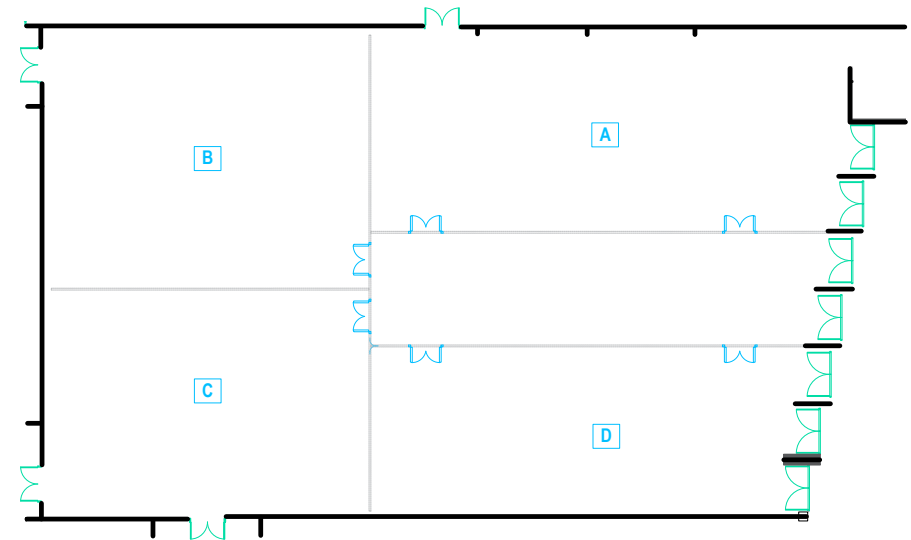
Dimensions (B)

Floor Area	741 sqm
Ceiling Height	7.5 m

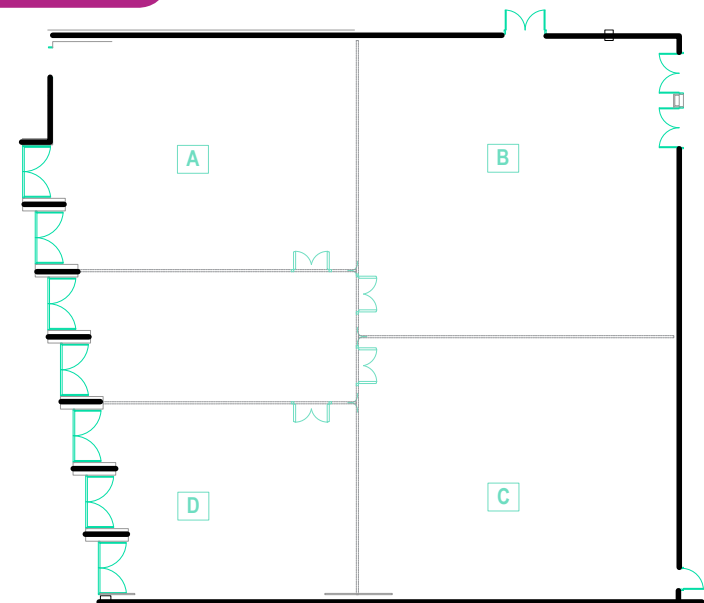
Capacities	Max Area	Part A	Part B	Part C	Part D
Area (sqm)	741	156	212	185	105
Cocktail/ Reception	432	112	140	120	68
Theatre Style	600	108	142	122	47
Classroom	288	54	87	72	40
Banquet	370	60	90	90	40



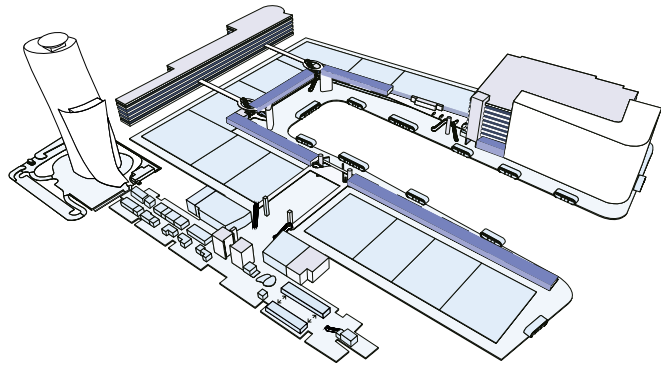
Conference Hall A



Conference Hall B

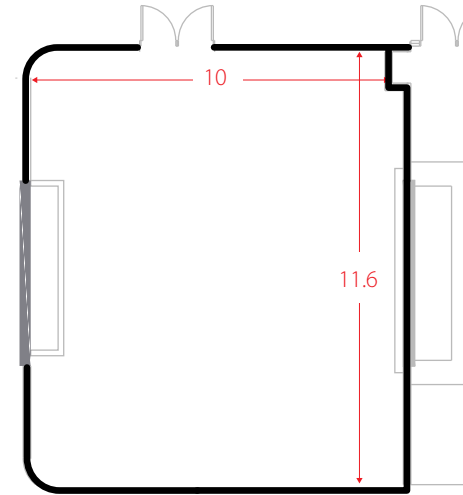


CAPITAL SUITES

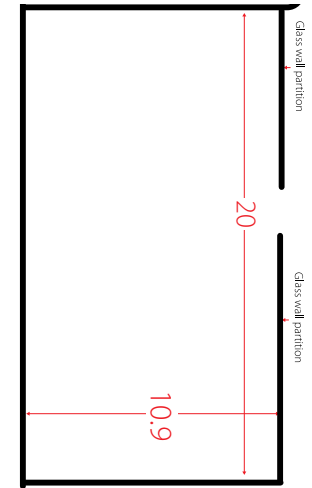


- › 21 meeting rooms
- › Capacities of 20 to 240 delegates
- › Located on the mezzanine floor of ADNEC
- › Easy access including for those with special needs
- › Can host a range of meetings, functions and smaller conferences
- › Larger Capital Suites are equipped with interconnected kitchen facilities

TYPICAL SMALL MEETING ROOM



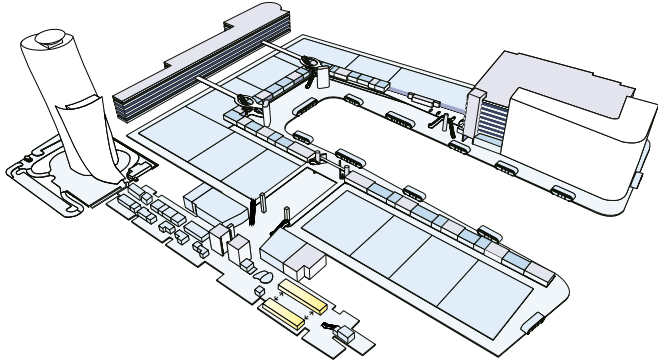
TYPICAL LARGE MEETING ROOM



Capital Suite Dimensions and Capacities

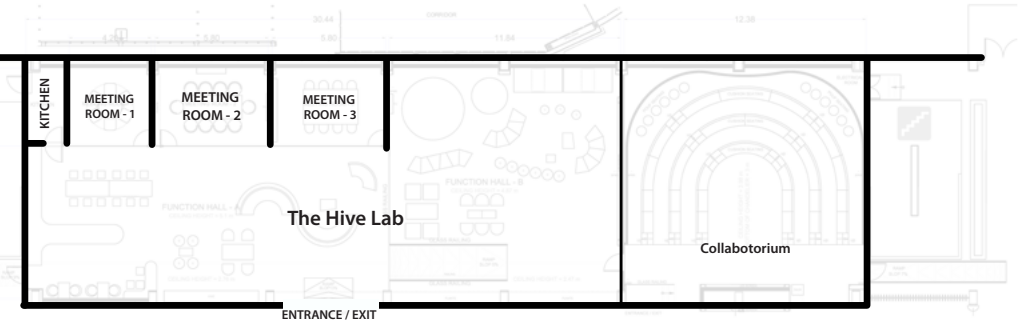
CS	Area (sqm)	Length (mtr)	Width (mtr)	Height (mtr)	Capacity					
					U-shaped	Boardroom	Classroom	Theatre	Cocktail	Banquet
1	214	20	10.9	3.1	59	54	108	170	180	120
2	110	10	11.6	3.1	32	30	45	70	80	50
3	169	15.7	11	3.1	47	42	84	140	132	90
4	111	10	11.7	3.1	32	30	45	70	80	50
5	233	21.7	10.9	3.1	65	60	120	196	200	140
6	110	10.1	11.7	3.16	32	30	45	70	80	50
7	228	21.5	10.9	3.16	65	54	108	196	180	140
8	166	15.7	10.9	3.16	47	36	84	130	140	90
9	108	9.8	11.5	3.15	32	30	45	73	80	60
10	170	15.6	10.9	3.15	47	42	84	140	140	90
11A	47	-	-	3.15	15	12	18	40	36	20
11B	46	-	-	3.15	21	18	24	33	32	20
11D	35	-	-	3.15	15	12	18	27	24	20
12A	56	-	-	2.79	21	18	24	39	48	20
12B	56	-	-	2.79	21	18	24	39	48	20
13	180	16.6	11	2.8	53	42	96	140	132	110
14	181	-	-	2.8	53	42	96	140	132	100
15	112	10.01	11.7	2.8	32	30	45	50	50	50
16	124	-	-	2.8	35	24	60	84	96	70
17	77	11.7	7	2.8	27	30	30	50	40	30
18	97	8.8	11.1	4	32	24	45	50	50	50
19	170	15.3	11.7	2.79	47	42	84	145	136	100
20	115	10.1	11.3	2.8	32	30	50	50	50	50
21A	99	12.13	8.51	3.7	26	24	36	50	28	40
21B	96	12.13	8.14	3.7	26	24	36	50	28	40
21C	101	12.13	8.63	3.7	26	24	36	65	28	40
21A + 21B	195	12.13	16.65	3.7	44	36	90	145	56	60
21B + 21C	197	12.13	16.77	3.7	44	36	90	145	56	60
21A + 21B + 21C	296	12.13	25.25	3.7	74	66	138	247	84	100

THE HIVE



The Hive is an innovative meeting space that offers its clients and partners a creative space to connect, create, and collaborate. Spread over a self-contained 665.8 sqm metre area, The Hive comprises an open plan space filled with flexible and modular furniture, 80-seat Collabororium, a grazing catering area and multiple individually themed private meeting rooms. Together with the white rooms across the hall, the Hive is an environment designed to stimulate creativity, generate ideas and build connections.

THE HIVE

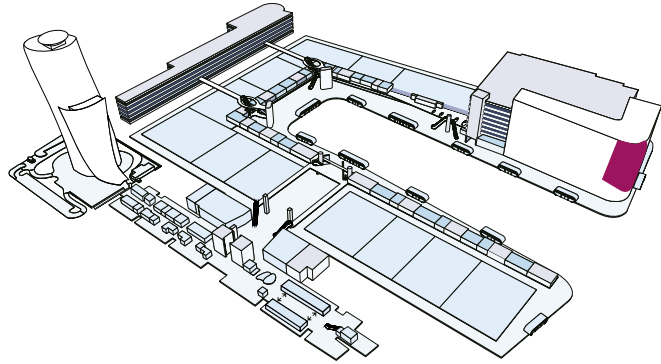


Venue

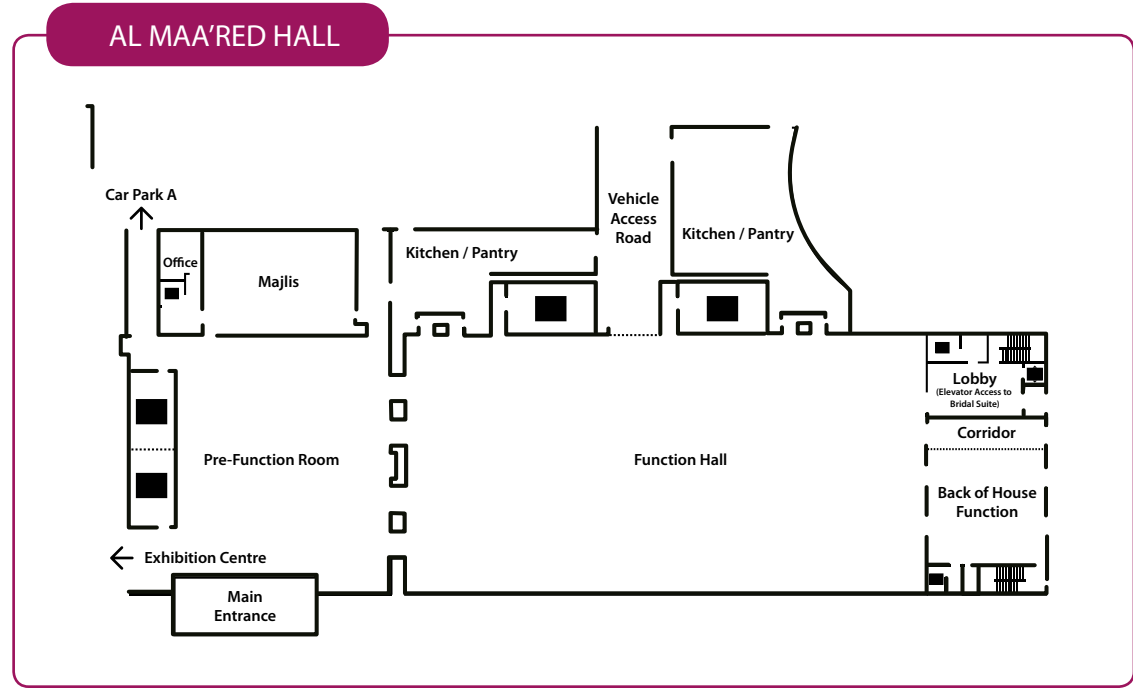
Area (SQM)

User Configurable Space	203.6
Lab Meeting Rooms (3)	63.2
Collabororium	157
White Room 1	38.42
White Room 2	74.59
White Room 3	38.42

AL MAA'RED HALL



- › Luxurious 1,445sqm hall space can be used for weddings and banquets
- › 558sqm pre-function hall
- › 150sqm Majlis
- › Additional facilities include:
 - ›› Luxurious carpet throughout the main hall
 - ›› Modern and elegant wall design finishing
 - ›› Stage
 - ›› VIP Majlis chairs



Hall Size	1,445 sqm
Pre-Function area	558 sqm
Hall width	27m
Hall length	55m
Hall ceiling height	6m
Hall chandelier height	3.2m
Maximum stage width	20m
Special fittings	Al Maa'red Hall has 8 Chandeliers each 3 meters in length
Additional Areas	Majlis, 2 x Kitchen Pantries, Band Area, 3 x bathrooms, an Office

Capacities	Max Area
Theatre Style	1394
Classroom	720
Banquet	750

Additional Information	
3m main guest entrance gangway	
2m catering access and perimeter gangways	
3m gangway behind stage as an emergency exit passage	
There are no roof rigging points in Al Maa'red Hall	

SERVICES AND AMENITIES

The venue has everything you need for a hassle-free experience, leaving you to make the most of your event. Whether it's an excellent cup of coffee you're after, banking services, car hire or an easy on-site airline check-in experience, we have got you covered.



Airport check-in onsite



Car Rental



ATM



Postal & freight Service



6,000 parking spaces and valet services



Transportation



Pharmacy



Retail



Onsite Catering



Protocol

ADNEC is dedicated to ensuring the access of your event. To that end, our specialised protocol team can help organisers smoothly navigate the complexities of government protocol and procedures.

The department provides support with connecting organisers with relevant entities and advises on the correct protocol and procedures for VIP and VVIP attendees. Additionally, the team can assist with patronage, organise opening ceremonies and manage secure delegations. protocol@adnec.ae



Marketing Support

Our marketing team is dedicated to ensuring the success of every event held at ADNEC and to this end, the team provides a number of complimentary services to ensure maximum visibility for your event.

Services include PR & social media support, promotion on our large outdoor and indoor digital screens, exposure on our 'what's on' page with a dedicated event page as well as email and SMS campaigns.

In addition to this, the newly launched Capital Plus programme allows organisers to offer added value for delegates and exhibitors. The free programme gives event badge holders access to exclusive leisure and dining outlets across the emirate.

Contact marketing at marketing@adnec.ae for more information on any of these services





ADNEC SERVICES

ADNEC Services offers a dedicated single point of contact for organisers, exhibitors, and retailers for setting up, connecting and activating stands, exhibitions and conference spaces. ADNEC Services deliver a seamless, one-stop approach. Services also includes media sales to help amplify your message to an international audience. Contact us today to find out more media@adnec.ae



ALOFT ABU DHABI

Aloft Abu Dhabi is the largest Aloft hotel in the Europe, Middle East and Africa region. The four star hotel offers 408 rooms over 12 storeys and is interconnected with ADNEC.



CAPITAL HOSPITALITY

ADNEC's in-house caterer, Capital Hospitality offer mouthwatering and creative, bespoke catering solutions to suit you. Our award-winning team can work with you to create memorable menus for your delegates or visitors, whether you are catering for exhibitions, meetings, conferences or creating grand dining experiences. Contact us to find out more sales@capitalhospitality.ae



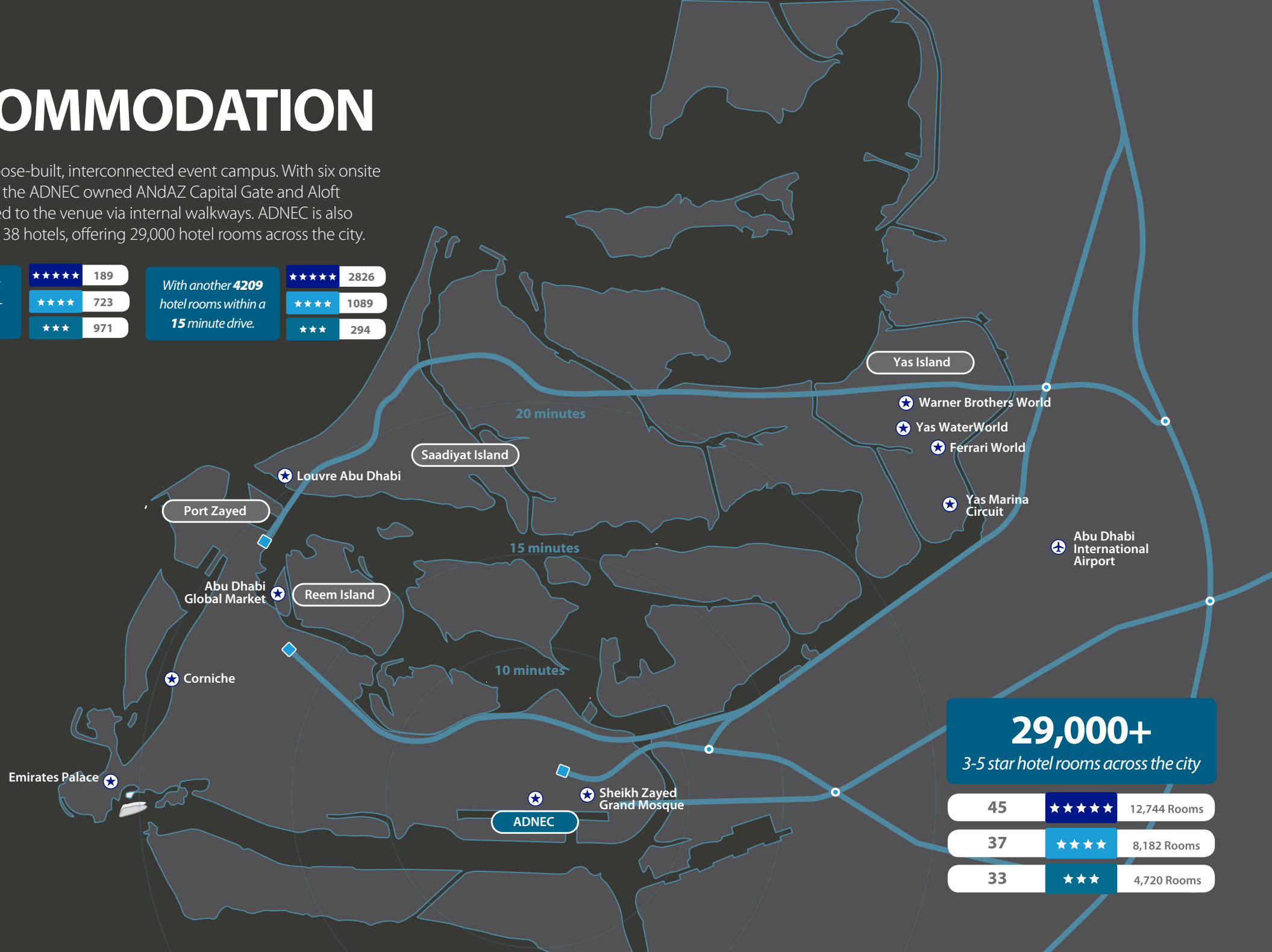
ANdAZ CAPITAL GATE HOTEL - ABU DHABI

Located in the iconic Capital Gate tower, the five star ANdAZ Capital Gate hotel provides 188 rooms and unsurpassed views of the city and coastline. The hotel is directly connected to ADNEC.

ACCOMMODATION

ADNEC is a purpose-built, interconnected event campus. With six onsite hotels including the ADNEC owned ANdAZ Capital Gate and Aloft hotels, connected to the venue via internal walkways. ADNEC is also within reach of 138 hotels, offering 29,000 hotel rooms across the city.

1800 hotel rooms within walking distance of ADNEC	★★★★★ 189	With another 4209 hotel rooms within a 15 minute drive.	★★★★★ 2826
	★★★★ 723		★★★★ 1089
	★★★ 971		★★★ 294



29,000+
3-5 star hotel rooms across the city

45	★★★★★	12,744 Rooms
37	★★★★	8,182 Rooms
33	★★★	4,720 Rooms

The World Within Your Reach

One of the most accessible venues in the world, ADNEC is just 15 minutes away from the rapidly expanding Abu Dhabi International Airport, 20 minutes from downtown Abu Dhabi and 60 minutes from Al Maktoum International Airport in Dubai.



Airports and airlines:



Abu Dhabi International Airport

+100 destinations, +50 airlines

Dubai International Airport

+260 destinations, 140 airlines

Al Maktoum International Airport (DWC)

+44 destinations, 27 airlines

Driving times to ADNEC:



Abu Dhabi International Airport

15 minutes

Al Maktoum International Airport

60 minutes

Dubai International Airport

90 minutes

Taxis are widely available at all airports and transfers can easily be pre-booked

حلبة مرسى ياس
YAS MARINA CIRCUIT



Entertaining Abu Dhabi



A MEMORABLE STAY



Sheikh Zayed Grand Mosque

A must-see attraction, the graceful mosque welcomes over 41,000 visitors a year.



Louvre Abu Dhabi

An art lovers dream, the Louvre houses artworks on loan from many notable museums including Musee d'Orsay and Centre Pompidou.



Ferrari World

A theme park that combines the history of Ferrari with heart-pounding rollercoasters and driving experiences.



Yas Waterworld

Yas Waterworld has 43 rides, slides & attractions including the 238-metre long, world's first, six-person tornado waterslide.



Desert Safari and Dune Bashing

Try a desert safaris with a thrill-a-minute spot of dune bashing, sand skiing, quad biking, camel riding, and a traditional meal under the stars.



Warner Bros World

Step into the world of Warner Bros at this thrilling theme park with rides, shows and attractions for everyone.



Al Ain Zoo

The fun filled Al Ain zoo offers fun for the whole family, you can get up close to the animals and even have dinner with a lion!



Al Ain Oasis

A UNESCO world heritage site, the oasis offers a shady retreat from the sun and a unique insight into UAE history.



Jebel Hafeet

A thrilling drive takes you to the highest point in Abu Dhabi with spectacular views over Al Ain and Oman.



Wadi Adventure

A thrill seekers paradise complete with zipline, white water rafting, kayaking and surfing only 20 minutes from Al Ain.



Shopping

Abu Dhabi is retail heaven offering luxury stores, modern malls as well as traditional souks for you to enjoy.



Beaches and Nature

The city is surrounded by over 100 beautiful islands, white sandy beaches and mangroves to explore.

MEET THE CONFERENCES TEAM



Robin Miller

Director - Sales (Conferences & Events)

Tel: +971 2 406 3673

Email: robin.miller@adnec.ae



Adele Maritz

Head - Sales (Conferences)

Tel: +971 2 406 3774

Email: adele.maritz@adnec.ae



Melissa Kronenberg

Senior Manager - Sales (Conferences & Congress)

Tel: +971 2 406 3255

Email: melissa.kronenberg@adnec.ae



Latifa Al Kaabi

Manager - Sales (Conferences)

Tel: +971 2 406 3728

Email: latifa.alkaabi@adnec.ae



Thembi Kuchena

Manager - Sales (Conferences)

Tel: +971 2 406 3889

Email: thembi.kuchena@adnec.ae

WELCOME TO
ADNEC

شركة أبوظبي الوطنية للمعارض
Abu Dhabi National Exhibitions Company



MEET THE CORPORATE AND EVENTS TEAM



Luis Soares

Head - Sales (Corporate and Special Events)

Tel: +971 2 406 3899

Email: Luis.soares@adnec.ae



Joul Hanonik

Senior Manager - Sales (Corporate & Special Events)

Tel: +971 2 406 3286

Email: joul.hanonik@adnec.ae

adnec.ae     ADNECGROUP